

# HDPE Pipe Butt Fusion Welding Machine

This machine is designed for butt fusion of HDPE pipes using the thermofusion method. It features a hot plate for heating the pipe ends, ensuring a strong and reliable weld.



## ADDITIONAL IMAGES



## Product Overview



Manual butt fusion welding machine designed for joining HDPE pipes using the hot plate method.

### Professional HDPE Butt Fusion Welding

This manual butt fusion welding machine is engineered for joining high-density polyethylene (HDPE) pipes and fittings with precision and reliability. Utilizing a controlled hot plate thermofusion method, it creates strong, leak-proof joints suitable for plumbing, gas, and fluid transfer systems. The robust frame and adjustable clamping system ensure consistent alignment and pressure, making it an ideal solution for both field and workshop applications.

## Technical Specifications



Features a heating plate to melt the pipe ends and a manual clamping system to apply pressure during the cooling phase.

<b>Welding Method</b>	Butt Fusion / Thermofusion
<b>Operation</b>	Manual
<b>Applications</b>	Plumbing, Gas Distribution, Water Transfer, On-site Welding, Workshop Use

## Key Features

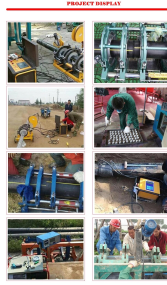


The machine features a robust frame with multiple pipe clamps to securely hold pipes of varying diameters.

### Core Components

- Robust structural frame
- Adjustable pipe clamps for various diameters
- Precision heating plate
- Integrated milling cutter for pipe end preparation
- Manual lever system for pressure control

## Operational Process



The machine is suitable for on-site and workshop applications, providing a durable and efficient solution for pipe joining.

## Welding Procedure

Step	Description
Preparation	Fix pipe in frame with 5-8cm gap
Facing	Use milling cutter to ensure smooth pipe ends
Heating	Apply hot plate at stable temperature
Fusion	Apply pressure according to pipe size and environment
Cooling	Allow joint to cool before removal