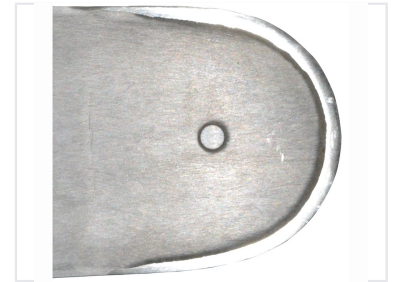


# Hard Nose Guide Bar

This is a solid nose guide bar designed for professional users. It is suitable for use in dirty or abrasive environments.



## Product Overview

### Industrial Hard Nose Guide Bar

This Hard Nose Guide Bar is engineered for demanding industrial environments where durability is paramount. Featuring an ultra-high-strength stellite alloy laser-welded to the nose, it ensures extended service life even under rigorous conditions. The bar body is constructed from super-tough chrome-moly steel, providing exceptional strength and resistance to wear and chipping.

## Material & Construction

Nose Material	Ultra-high-strength stellite alloy
Body Material	Chrome-moly steel
Construction Method	Laser-welded nose, High-strength fabrication

## Performance Features

### Performance Highlights

- Excellent resistance to wear
- High resistance to chipping
- Superior bar-body strength
- Extended bar life