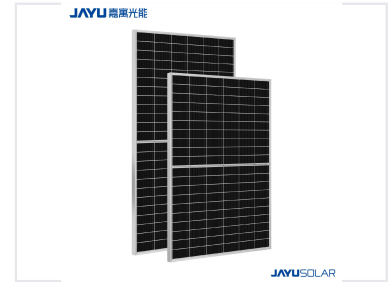


# Half-Cell 9-Busbar Mono PERC Solar Module

This high-efficiency mono PERC solar module features half-cell technology and a 9-busbar design. It is available in 120-cell and 144-cell configurations with power outputs of 325-345W and 390-410W respectively.



## Overview

### High-Performance Solar Module

This advanced Mono PERC solar module utilizes cutting-edge half-cell and 9-busbar technology to maximize power output while minimizing system costs. Engineered for resilience, the module features a high-strength frame capable of withstanding significant wind and snow loads, alongside specialized drainage designs to prevent structural damage. With superior anti-PID performance and reduced hot spot risks, this module offers exceptional reliability for long-term energy generation.

## Technical Specifications

### Mechanical Load Capacity

**2400 Pa**

Wind Load

**5400 Pa**

Snow Load

### Cell Technology

Mono PERC, Half-cut Cell, 9-Busbar, Multi Grid

### Impact Resistance

25 mm hail stones at 82 km/h

## Performance Features

### Key Performance Benefits

- Multi Grid Battery Technology for higher output power
- Half-cut cell design reduces internal current and resistance loss
- Drainage design prevents deformation and freezing fractures
- Significantly lower risk of hot spots
- Excellent Anti-PID performance

## Quality & Standards

### Reliability Standards

Anti-PID Certified • High Reliability • Stringent Quality Control