

Guard Tour System with Flashlight

This guard tour system enhances patrol management and accountability. The integrated flashlight provides enhanced visibility in low-light conditions, improving safety and effectiveness during patrols.



ADDITIONAL IMAGES



Overview



A comprehensive security solution designed to enhance patrol management and accountability.

Professional Guard Tour Solution

This advanced guard tour system is engineered for reliable security patrol management in demanding environments. Featuring an integrated high-intensity flashlight, it ensures visibility and operational efficiency during night shifts or in low-light conditions. The device is built with a rugged, waterproof, and shockproof design, making it an ideal tool for security personnel, property managers, and facility inspectors who require precise, verifiable patrol tracking.

Key Features



Designed for night security with a 7-meter irradiation range and touch button interface.

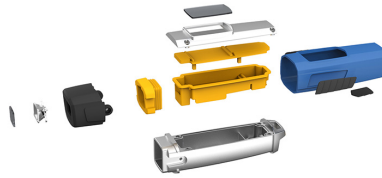
Core Capabilities

Integrated Flashlight, IP67 Waterproof, Shockproof Design, Voice & Light Prompts, Auto Induction Reading, Real-time Tracking

Technical Specifications

Design

WM-5000V45 has fundamentally improved silicon tank metal body with rubber shell outside IP 67 is the strongest, most durable used in any guard tour system



Silicon tank metal body encased in a rubber shell for maximum durability and IP67 protection.

Physical Dimensions

148 mm

Length

47 mm

Width

30 mm

Depth

243 g

Weight

Performance Data

Parameter	Value
Frequency	125KHz
Flashlight Range	5-7m
Reading Distance	3-5cm
Memory Capacity	60,000 records
Battery Capacity	1150mAh

Environmental Ratings



High-intensity LED light source suitable for harsh, dark, and underwater environments.

Operating Environment

- Temperature Range: -40°C to +85°C
- Humidity: 10% to 90% (non-condensing)
- Water/Dust Resistance: IP67

Certifications

Certifications

ISO9001:2000