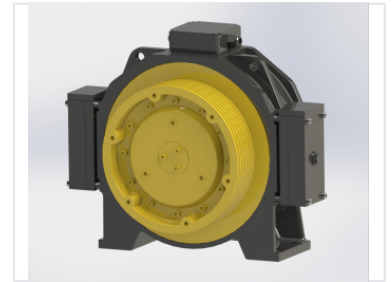
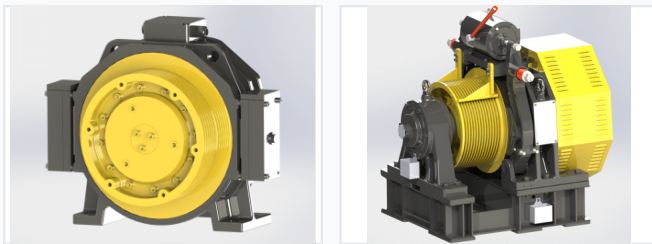


# Gearless Elevator Traction Machine

This gearless elevator traction machine features a high-efficiency motor directly coupled to the traction sheave, which eliminates the need for a gearbox. It is designed for smooth and reliable operation with reduced energy consumption.



## ADDITIONAL IMAGES



## Product Overview

### Gearless Traction Technology

The permanent magnet synchronous gearless traction machine is a high-performance power device designed for modern elevator systems. By utilizing direct-drive motor technology, it eliminates the need for a gearbox, resulting in superior transmission efficiency and reduced energy consumption. This system ensures smooth, quiet, and reliable vertical transportation, making it an ideal solution for buildings prioritizing safety, space-saving, and low maintenance.

## Technical Specifications

Supported Traction Ratios	1:1, 2:1, 4:1, 6:1
Drive Mechanism	Permanent Magnet Synchronous Gearless

## Key Features

### Performance Advantages

- High transmission efficiency
- Low energy consumption
- Quiet operation
- Compact design
- Long service life
- Low maintenance requirements

### Operational Highlights

**0 None**

Gearbox Requirement

## Safety & Reliability

### Safety Components

Integrated Brake System • Protective Enclosure • Robust Frame