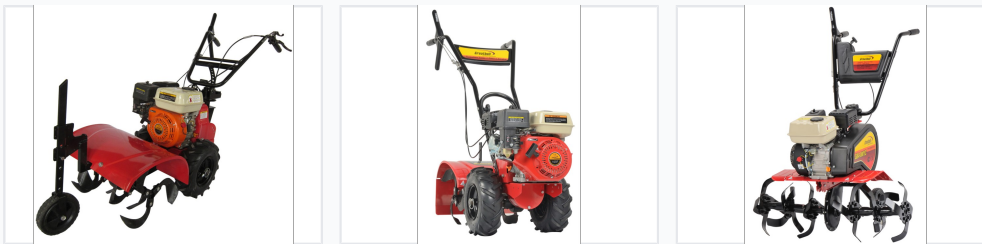


# Gasoline Powered Tiller

This gasoline powered tiller is designed for soil cultivation and preparation. Its rotating blades effectively break up and turn the soil, creating a suitable seedbed for planting.



## ADDITIONAL IMAGES



## Product Overview

### Professional Soil Cultivation

This powerful gasoline-powered tiller is engineered for efficient soil preparation and cultivation in both garden and agricultural settings. Equipped with a reliable 4-stroke OHV engine, it features durable rotating tines designed to break up and aerate soil for optimal seedbed conditions. The unit includes adjustable handles and depth control, ensuring operator comfort and versatility across various soil types.

## Technical Specifications

Engine Model	1E44F-5 / 168F
Engine Type	OHV 4-Stroke
Displacement	140 cc

## Performance Metrics

### Core Performance

**3 KW**

Max Output Power

**6.5 HP**

Horsepower

## Dimensions and Capacity

### Tilling Dimensions

Dimension	Range
Tilling Depth	150-200 mm
Tilling Width	370-550 mm

## Compliance and Standards

International Certifications

GS, CE, EMC, NOISE, EPA, CARB