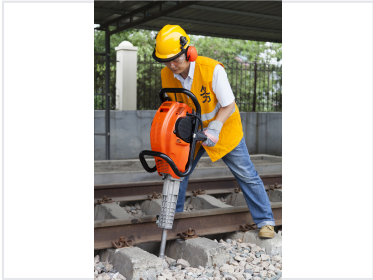


# Gasoline Powered Demolition Jackhammer

This demolition jackhammer is powered by a gasoline engine for cordless operation. It delivers high impact energy for breaking concrete, asphalt, and other hard materials.



## ADDITIONAL IMAGES



## Product Overview

### High-Performance Gasoline Demolition Breaker

The ND-40II petrol-powered demolition jackhammer is a professional-grade tool engineered for heavy-duty breaking tasks, including concrete, asphalt, and hard-packed soil. Designed for mobility and power, it eliminates the need for external power sources, making it an ideal solution for remote construction sites, road maintenance, and railway repairs. Its ergonomic construction and integrated vibration-dampening technology significantly reduce operator fatigue during extended use.

## Technical Specifications

### Performance Metrics

**40 J**

Impact Energy

**1500 BPM**

Blows Per Minute

### Power Source

Gasoline Engine

### Key Features

Anti-Vibration Technology, Cordless Operation, Heavy-Duty Chisel, Ergonomic Handles

## Applications

### Primary Applications

- Concrete demolition
- Asphalt breaking
- Road maintenance
- Railway repair
- General construction