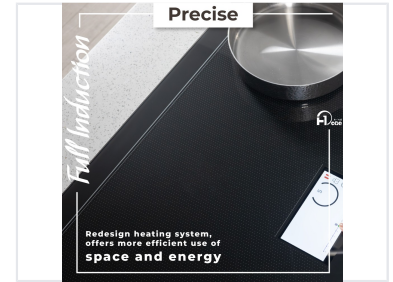
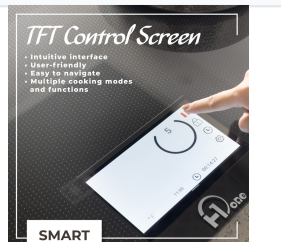
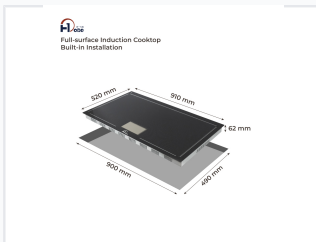


Full Surface Induction Cooktop with TFT Control

This full-surface hob offers ultimate flexibility with precise induction control, allowing cookware to be placed anywhere on the surface. It features a TFT screen control with multiple cooking modes and functions.



ADDITIONAL IMAGES



Overview

 <p>Flexibility No fixed cooking area, allowing for more flexibility in cookware placement.</p>	 <p>Intuitive interface The TFT control interface makes it simple for users to select the desired settings and cooking options.</p>
---	--

Experience unparalleled flexibility with a full-surface design that eliminates fixed cooking zones.

Advanced Full-Surface Induction Technology

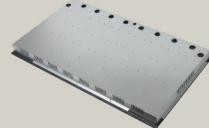
This full-surface induction cooktop offers ultimate flexibility, allowing you to place cookware anywhere on the hob surface. Equipped with an intuitive TFT control screen, it provides a user-friendly interface for precise navigation and cooking adjustments. Designed for modern kitchens, this unit combines efficient heating performance with a comprehensive suite of safety features for a seamless cooking experience.

Technical Specifications



Versatility

Induction heating with TFT control comes with a variety of cooking modes



Precision

Half-bridge induction heating system with redesigned heating elements, providing more efficient use of space and energy.

The half-bridge induction system with redesigned heating elements ensures efficient use of space and energy.

Product Model	81F0
Product Size	910 x 520 x 62 mm
Cut-out Size	900 x 490 mm
Power Rating	7200 W
Electrical Connection	220-240V, 50-60Hz

Features & Control



The intuitive TFT interface provides clear, precise control over temperature and cooking modes.

Control Interface	TFT Screen Control
Safety & Protection Functions	Auto pan detection, Timer, Pause, Child lock, Residual heat indicator, Overheating protection, Water overflow protection