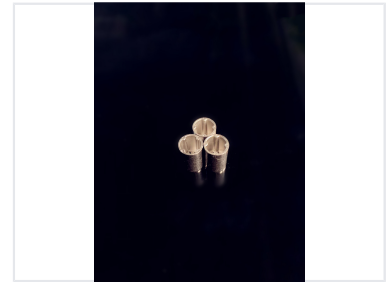
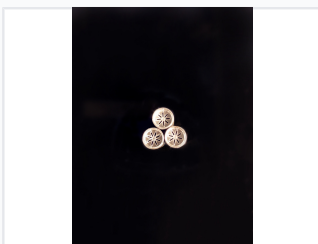


# Fuel Injection Nozzle for Automotive Engines

This fuel injection nozzle is designed for optimal fuel atomization and efficient combustion. Its precision-engineered spray pattern ensures improved engine performance and reduced emissions.



## ADDITIONAL IMAGES



## Product Overview

### High-Performance Fuel Injection Nozzle

This fuel injection nozzle is engineered to optimize engine performance through superior fuel atomization. By ejecting fuel through an annular gap at high speeds, it creates a fine mist that promotes full, efficient combustion. Constructed from durable, high-grade materials, this component is designed to withstand the rigorous demands of high-temperature and high-pressure automotive environments while reducing emissions.

## Technical Specifications

### Durability Features

- High-grade material construction
- Corrosion resistant
- High-temperature tolerance
- High-pressure tolerance

### Compatibility & Standards

OEM Compliant • Multi-fuel system compatible

### Atomization Method

High-speed annular gap ejection

### Performance Benefits

Improved fuel atomization, Efficient combustion, Reduced emissions, Enhanced fuel economy, Smooth acceleration