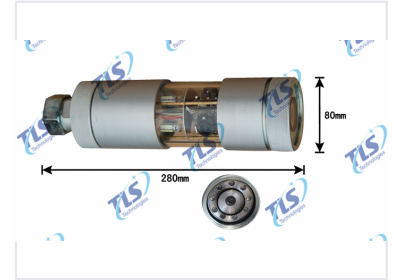


# Four-View Borehole Inspection Camera System

This borehole inspection camera system is equipped with four HD cameras. One camera faces downward from the probe's end, while the other three provide fan-shaped coverage from the probe's middle.



## ADDITIONAL IMAGES



## Overview

### Professional Borehole Analysis System

The Four-View Borehole Inspection Camera System is a high-performance tool designed for detailed visual inspection of boreholes, pipes, and confined spaces. Engineered for durability, it features a robust cable reel and a waterproof multi-view camera head that provides comprehensive imagery for structural assessment. This system is an essential solution for geological surveys, environmental monitoring, and infrastructure projects requiring real-time, high-resolution subsurface insights.

## Technical Specifications

### Probe Dimensions

**280 mm**  
Length

**80 mm**  
Diameter

### Key Features

Four-View Imaging, Waterproof Housing, Integrated Lighting, Real-time Recording, Portable Control Unit

## Applications

### Primary Applications

- Geological Surveys
- Environmental Monitoring
- Infrastructure Inspection
- Foreign Engineering Contracting