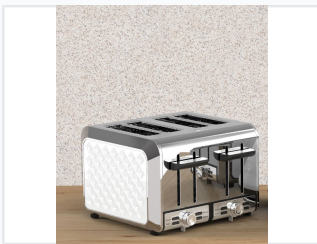


# Four-Slice Stainless Steel Toaster with Diamond Pattern

This four-slice toaster features a durable stainless steel construction with a diamond pattern. It includes cancel, reheat, defrost, and bagel functions, as well as a removable crumb tray for easy cleaning.



## ADDITIONAL IMAGES



## Product Overview

### Elegant Four-Slice Toasting Solution

This premium four-slice toaster combines durable stainless steel construction with a sophisticated diamond pattern finish, making it a perfect aesthetic addition to any professional kitchen. It features versatile functionality including bagel, defrost, and reheat modes to handle various bread types with ease. Designed for both performance and convenience, the appliance offers independent control for consistent browning results every time.

## Technical Specifications

### Power Rating (EU)

**1850 W**

Maximum Power

**240 V**

Voltage

### Power Rating (US)

**1500 W**

Power

**120 V**

Voltage

## Features

### Functions

- Cancel
- Reheat
- Defrost
- Bagel

## Certifications

Approvals

CE, CB, GS, SAA, ETL

## Design

Material

Stainless steel housing with diamond pattern