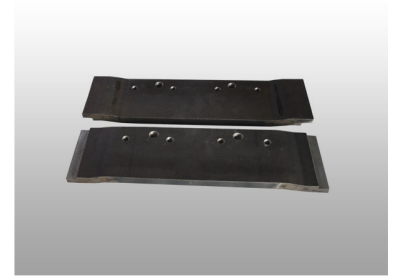


# Forklift Radiator Cover

This radiator cover is engineered for Mitsubishi forklifts. It protects the radiator while ensuring efficient cooling system performance.



## Product Overview

### Precision-Engineered Radiator Protection

This custom-designed radiator cover is engineered specifically for forklift cooling systems, providing essential protection against debris and impact in demanding industrial environments. Manufactured using advanced sheet metal processing techniques, it ensures durability and long-term reliability. The component features precise mounting points for seamless integration, supporting optimal cooling performance for heavy-duty machinery.

## Manufacturing Capabilities

### Production Equipment

- Laser Cutting Machines
- Flame Cutting Machines
- AMADA Bending Machines (8T, 80T, 150T)
- AMADA Punching Machines (35T, 45T)
- Matsushita Welding Robots
- Hydraulic Press (200A)
- Milling Machines
- Shear Machines

### Processing Methods

Sheet Metal Processing, Laser Cutting, Flame Cutting, Plasma Cutting, Mechanical Processing, Riveting, Welding

## Product Details

### Application

Forklift Accessories • Radiator Protection • Industrial Machinery

### Compatibility Focus

Designed for specific forklift cooling system integration