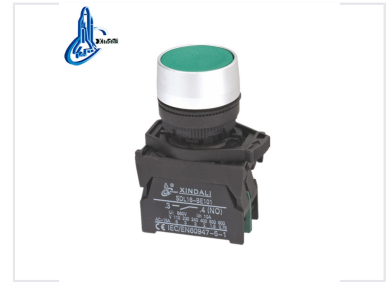


# Flush Green IP65 Waterproof Metal Push Button Switch

This flush green push button switch is constructed with metal and has an IP65 waterproof rating. It is designed for use in electrical power applications, such as distribution boxes and control cabinets.



## Product Overview




**Specializing in production of buttons and indicators since 1997**

Flush green push button design optimized for industrial control panels.

## Industrial Flush Push Button Switch

This flush-mounted push button switch is engineered for high-performance industrial control circuits. Constructed with a zinc alloy body and high-grade anti-flame plastic, it offers excellent durability and reliability. Designed to operate under harsh conditions, it features an IP65 waterproof rating, making it suitable for demanding electrical environments including control cabinets and power stations.

## Technical Specifications

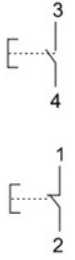


XDL21-BA31

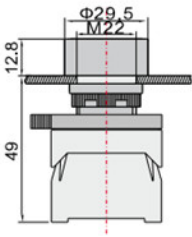
Flush push button  
Spring return

N/O

N/C



- Black XDL21-BA21
- Green XDL21-BA31
- Yellow XDL21-BA51
- Blue XDL21-BA61
- Red XDL21-BA42



Dimensional drawing showing mounting hole size and panel thickness compatibility.

### Mounting Dimensions

- Mounting hole diameter: 29.5mm (M22 thread)
- Panel thickness: 12.8mm
- Overall height: 49mm

Rated Insulation Voltage	660 V
Conventional Heating Current	10 A
Insulation Resistance	e5M©
Contact Resistance	d25©
Mechanical Life	1,000,000 cycles

## Certifications and Compliance

Standards & Certifications	CE, ISO 9001, RoHS, UL, IEC60947-5-1, GB/T14048.1
----------------------------	---

## Applications

### Typical Industrial Use Cases

- Distribution boxes
- Distribution cabinets
- Control cabinets
- Power stations
- Communication networks