

# Fingerprint Guard Tour System with RFID/Bluetooth Options

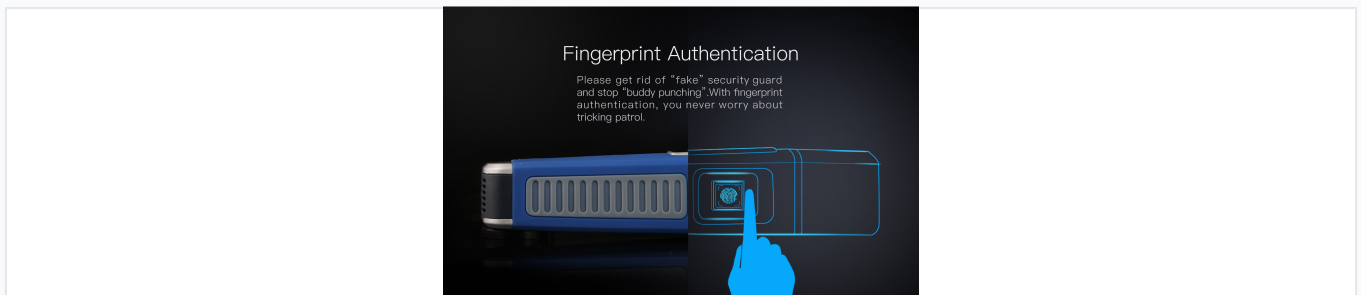
This system uses fingerprint authentication for verifiable security patrol management. It features intelligent voice prompts and offers options for standard RFID or Bluetooth tag compatibility.



## ADDITIONAL IMAGES



## Overview

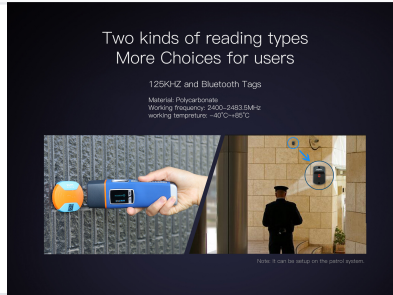


Biometric verification ensures patrol integrity and prevents falsified entries.

## Advanced Guard Patrol Solution

This professional guard tour system integrates biometric fingerprint authentication with intelligent voice prompts to ensure verifiable and efficient security patrols. Designed to eliminate issues like buddy punching and fake patrol entries, it offers a robust, scientific approach to staff management. The system supports flexible scheduling, ranging from hourly to yearly plans, and is built for durability in demanding environments.

## Technical Specifications



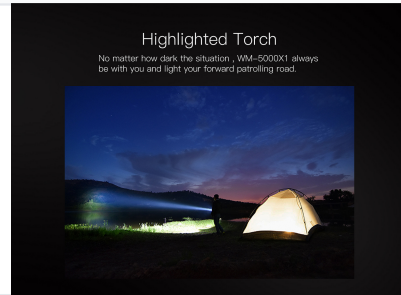
Rugged design built to withstand extreme temperatures and environmental conditions.

Tag Compatibility	125kHz RFID, Bluetooth
Operating Temperature	-40°C to +85°C
Working Frequency	2400 MHz
Housing Material	Polycarbonate

## Features



Intelligent voice prompts provide direct, audible feedback during operation.



Built-in high-performance torch for clear visibility in dark environments.

### Key Capabilities

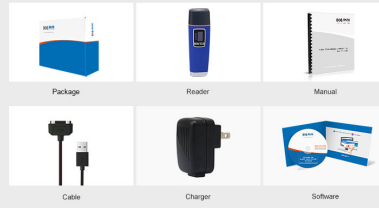
Fingerprint Authentication • Voice Prompts • Built-in Torch • Patrol Scheduling

### Scheduling Options

- Hourly
- Daily
- Monthly
- Yearly
- Custom Rest Days

## Package Contents

### Guard Tour System Complete Kit WM-5000X1



Complete professional kit ready for immediate deployment.

### Standard Kit Components

- Guard Tour Reader
- Data Transfer Cable
- Charging Unit
- Management Software
- User Manual