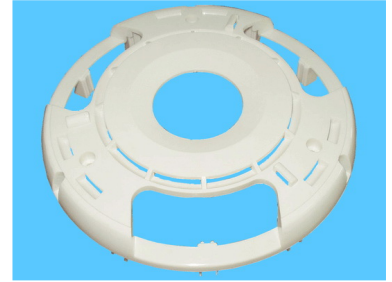


Fan Component - Circular Plastic Support Structure for Airflow

This plastic fan component features a circular design with support structures. It provides structural support and facilitates airflow within fan assemblies.



Product Overview

Circular Plastic Airflow Support Structure

This precision-engineered circular support structure is designed as a critical component for electrical fan and exhaust fan assemblies. Featuring a robust white plastic construction, the component provides essential structural integrity while facilitating optimal airflow through its central opening. Equipped with integrated mounting points around its perimeter, it ensures secure installation and long-term reliability in various ventilation systems.

Physical Characteristics

Material	High-grade industrial plastic
Color	White
Design Features	Circular Geometry, Central Airflow Opening, Integrated Mounting Points

Application

Compatible Equipment

- Electrical Fan Assemblies
- Exhaust Fan Systems
- Ventilation Infrastructure

Primary Function

Structural Support • Airflow Management