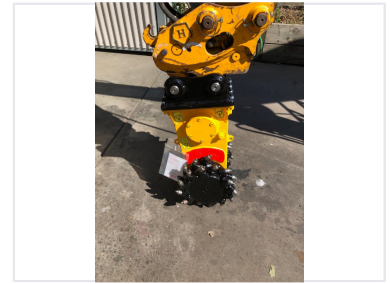


# Excavator Rotary Drum Cutter for Mining and Milling

This drum cutter BC2 is designed for mini excavators between 0.7 and 2.5 tons. It is suitable for concrete wall profiling, trench excavation, rock excavation, demolition, digging, scaling, tunneling, grinding, and quarrying.



## ADDITIONAL IMAGES



## Product Overview

### High-Performance Rotary Drum Cutter

This hydraulic rotary drum cutter is engineered for mini excavators in the 0.7 to 2.5-ton range, providing exceptional versatility for demanding construction and mining tasks. It excels in applications ranging from concrete wall profiling and trench excavation to rock demolition and tunneling. Designed for durability and efficiency, this attachment helps operators achieve precise material removal with minimal downtime.

## Technical Specifications

### Compatible Excavator Weight

**0.7 ton**  
Min Weight

**2.5 ton**  
Max Weight

Model

BC2

## Certifications & Quality

Certifications

ISO 9001, CE

## Applications

### Primary Applications

- Concrete wall and surface profiling
- Trench excavation
- Rock excavation
- Demolition trenching
- Scaling
- Tunneling
- Grinding
- Quarrying