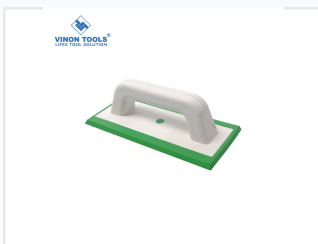


Epoxy Float Trowel with Rubber Pad and Plastic Handle

This epoxy float trowel is equipped with a durable rubber pad, ensuring smooth and even application. It features a comfortable, ergonomic plastic handle for a secure grip and reduced hand fatigue during extended use.



ADDITIONAL IMAGES



Product Overview

Professional Grouting Efficiency

This high-quality epoxy float trowel is engineered for professionals requiring precision and comfort during tile finishing. Featuring a durable rubber pad and an ergonomic plastic handle, it ensures consistent application of epoxy and bonding agents while minimizing hand fatigue. Its lightweight construction makes it an essential tool for achieving smooth, level finishes in demanding construction and renovation projects.

Technical Features

Design Advantages

- Ergonomic handle design for reduced fatigue
- Excellent control for precise applications
- Lightweight architecture for extended use
- Low-odor rubber material

Material Composition

Durable Rubber, High-Grade Plastic Handle

Usage Guidelines

Recommended Usage

| Task | Instruction |
|-------------|--|
| Application | Use for applying epoxy and bonding agents between tiles. |
| Technique | Hold at a shallow angle and press grout into the joint. |