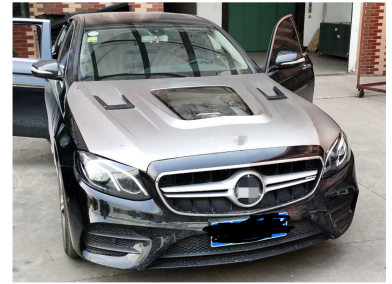
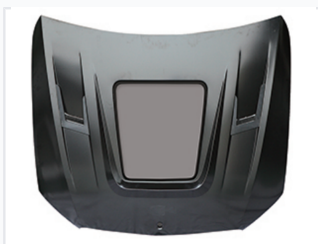


Engine Hood for 2016+ Mercedes-Benz E-Class W213

This engine hood is compatible with Mercedes-Benz E-Class W213 vehicles manufactured from 2016 onwards. Constructed from robust materials, it offers impact and corrosion resistance while enhancing airflow for improved engine cooling.



ADDITIONAL IMAGES



Product Overview

Premium Replacement Engine Hood

This high-quality aftermarket engine hood is precision-engineered for W213 chassis vehicles manufactured from 2016 onwards. Designed to meet or exceed OEM specifications, it offers a seamless fit and robust protection for the engine compartment. The construction utilizes durable materials that provide excellent resistance to impact and corrosion, ensuring long-term reliability and performance.

Compatibility & Fitment

Compatible Models

E-Class W213, 2016+

Technical Features

Key Design Features

- Aerodynamic profile for improved airflow
- Integrated engine cooling vents
- Central transparent engine bay viewing panel
- Smooth, paintable surface finish

Material Performance

Impact Resistant • Corrosion Resistant • High Durability