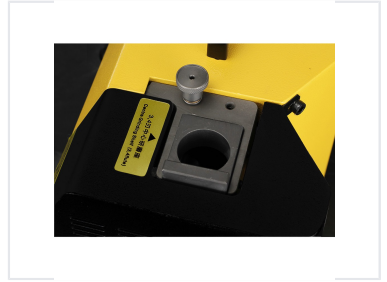


# End Mill Sharpener Grinder 4-14mm

This end mill sharpener is a portable and easy-to-use machine for grinding 2, 3, and 4 flute end mills. It utilizes a Taiwan diamond grinding wheel for accurate and rapid grinding, without requiring specialized skills.



## ADDITIONAL IMAGES



## Overview

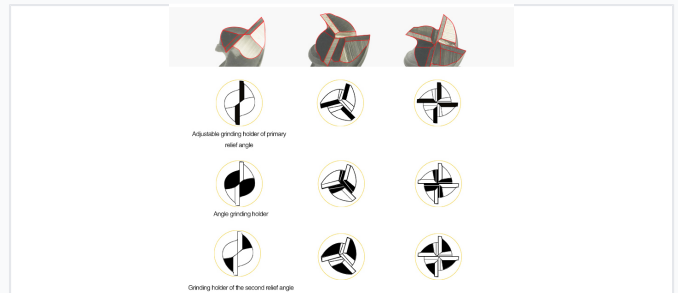
### Precision End Mill Sharpening

This portable end mill sharpener is designed to provide rapid and accurate grinding for 2, 3, and 4-flute end mills. Featuring an intuitive operation system that requires minimal skill, it ensures consistent results and extends the service life of your cutting tools. The machine is built for durability and precision, making it an essential maintenance tool for any workshop or tool room.

## Technical Specifications



The relief angle grinding shelf supports 2, 3, and 4-flute end mills for accurate sharpening.



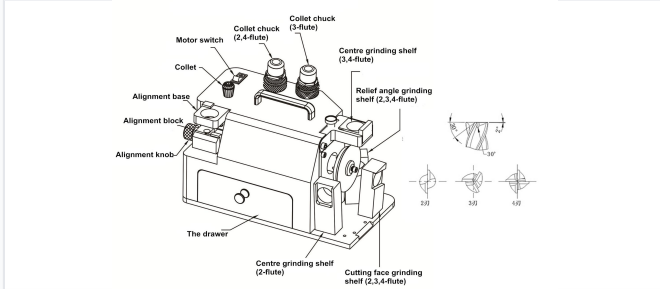
Adjustable holders allow for precise primary and secondary relief angle grinding.

Grinding Diameter Range	4mm - 14mm
Power Requirements	220V / 160W
Grinding Speed	4400 rpm
Point Angle	3 degrees

## Physical Attributes

Unit Dimensions	35 x 25 x 25 cm
Total Weight	14 kg

## Capabilities



Detailed view of the alignment controls, collet chucks, and grinding shelves for different flute configurations.



The cutting face grinding shelf is clearly marked for 2, 3, and 4-flute tools, ensuring precise edge maintenance.

### Grinding Wheel Compatibility

- SDC (Standard, for Carbide)
- CBN (Optional, for HSS)

Compatible Flute Counts	2-flute, 3-flute, 4-flute
-------------------------	---------------------------

## Included Equipment

### Included Components

Item	Quantity/Details
Grinding Wheel (SDC)	1 piece
Collets	6 pieces (I4, I6, I8, I10, I12, I14)
Collet Chucks	2 pieces