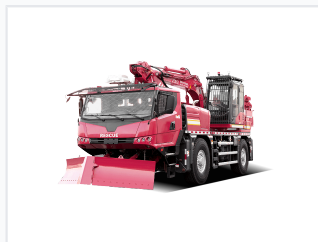


# Emergency Rescue Fire Truck with Hydraulic Tools

This emergency rescue fire truck is designed for a wide range of response scenarios. It is equipped with hydraulic tools to achieve digging, crushing, shearing, and grabbing functions.



## ADDITIONAL IMAGES



## Overview

### Multi-functional Emergency Rescue Fire Truck

This specialized emergency response vehicle is engineered for rapid intervention in both urban and rural environments. Built on a robust 4X4 off-road chassis, it combines advanced firefighting capabilities with heavy-duty rescue tools. The vehicle features a versatile hydraulic crane, front-mounted obstacle clearing equipment, and an independent suspension system to ensure mobility and stability across challenging terrains.

## Chassis & Mobility



Robust all-terrain chassis design with integrated towing and storage compartments for critical rescue tools.

Drivetrain	4X4 Full Axle Drive
Steering Modes	Normal Road Driving, Small Turning, Crabbing, Rear Axle Locking
Suspension Type	Independent Oil and Gas Suspension

## Rescue & Operational Equipment



The JY20G2 model featuring a front-mounted dozer blade for obstacle clearance and rapid access.

### Included Rescue Tools

Hydraulic Crane • Hydraulic Spreaders • Hydraulic Cutters • Front-Mounted Dozer/Snowplow

### Operational Capabilities

- Telescopic boom with rescue platform
- High-intensity emergency lighting
- Integrated communication systems
- Dedicated storage compartments for specialized tools

## Firefighting Capabilities



Equipped with a telescopic boom for elevated operations and comprehensive firefighting systems.

### Fire Suppression Systems

- High-pressure water pump
- Water cannon
- Foam system
- Integrated water tank and hose reels