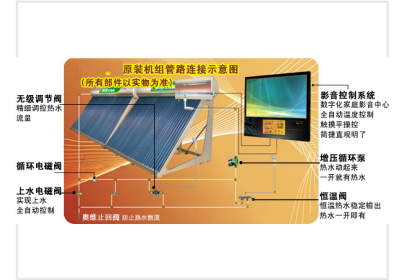


Embedded System Control Module

This embedded system control module is designed for automation and control applications. It enables precise management of hot water flow, temperature, and system operations within digital home theaters and similar setups.



Overview

Advanced Embedded Control System

This embedded system control module is designed to provide fully automatic, precise management of water heating and circulation systems. It integrates seamlessly with digital home theater audio-visual controls, offering intuitive touch-screen operation for complex environmental management. The system ensures immediate hot water availability and stable output temperatures through advanced valve and pump synchronization.

System Capabilities

Key Control Features

- Fully automatic water supply control
- Precise hot water flow regulation
- Digital home theater audio-visual integration
- Intuitive touch-screen interface
- Automatic temperature regulation

System Components

Integrated Components

| Component | Function |
|------------------------------------|--------------------------------|
| Continuously Variable Valve | Precise hot water flow control |
| Circulating Solenoid Valve | System circulation management |
| Water Inlet Solenoid Valve | Automatic water supply |
| Check Valve | Prevents hot water backflow |
| Pressure Boosting Circulation Pump | Immediate hot water delivery |
| Thermostatic Valve | Stable hot water output |