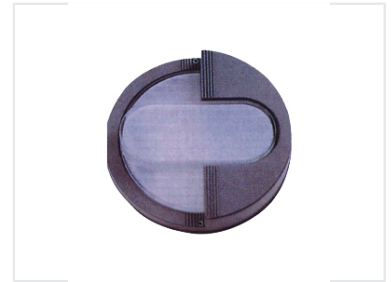


# Electronic Display Component with Translucent Center

This is an electronic display component with a round, gray design. It features a translucent, oblong center.



## Product Overview

### Precision Electronic Display Component

This electronic display component is engineered for integration into professional monitor systems and peripheral devices. Its distinctive design features a circular outer frame with a translucent, oblong central aperture, optimized for light transmission and display clarity. This component is an ideal solution for manufacturers seeking reliable, high-quality hardware for display assembly and optical systems.

## Physical Characteristics

Form Factor	Circular outer frame with rectangular central opening
Color/Finish	Gray
Optical Features	Translucent center, Light transmission optimized

## Application

### Primary Applications

- Computer monitor assembly
- Electronic display systems
- Peripheral device hardware