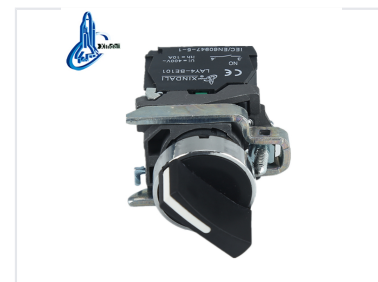


Electrical Position Switch

This electrical position switch is designed for industrial applications. It is suitable for use in a variety of control systems, providing accurate position feedback.



ADDITIONAL IMAGES



Overview

Model and meanings:

LAY

1 2 3 4 5 6 7 8 9 10 11 12 13 14 15 16 17 18 19 20 21 22 23 24 25 26 27 28 29 30 31 32 33 34 35 36 37 38 39 40 41 42 43 44 45 46 47 48 49 50 51 52 53 54 55 56 57 58 59 60 61 62 63 64 65 66 67 68 69 70 71 72 73 74 75 76 77 78 79 80 81 82 83 84 85 86 87 88 89 90 91 92 93 94 95 96 97 98 99 100

Refer to the introduction
According to structure type (Refer to the introduction)
Optional: Blank (indicates current type signal lamp), "C" if
indicates emergency type signal lamp
indicates structure (Refer to the introduction)
Material: "M" in it denotes metal type, "P" in it denotes plastic type
Design code
Push button and Signal lamp

1) Denotes whether base material: "M" in it means metal type, "P" in it means plastic type
2) Letters denote structure type

A: Flush button C: 400kN/m² button R: 400kN/m² button D: Standard handle knob
S: Long handle knob G: New switch L: Control button P: Button with water-proof cover
T: Turn-to-release type emergency button F: Push and pull type emergency button
W: Button with lamp K: Switch with lamp H: Anti-locking emergency button V: Indicator lamp

3) Optional: Blank denotes normal type signal lamp, "C" in it denotes emergency type signal lamp
4) The number after 1/2/3/4/5/6/7/8/9/10/11/12/13/14/15/16/17/18/19/20/21/22/23/24/25/26/27/28/29/30/31/32/33/34/35/36/37/38/39/40/41/42/43/44/45/46/47/48/49/50/51/52/53/54/55/56/57/58/59/60/61/62/63/64/65/66/67/68/69/70/71/72/73/74/75/76/77/78/79/80/81/82/83/84/85/86/87/88/89/90/91/92/93/94/95/96/97/98/99/100

The number after 51/52/53/54/55/56/57/58/59/60/61/62/63/64/65/66/67/68/69/70/71/72/73/74/75/76/77/78/79/80/81/82/83/84/85/86/87/88/89/90/91/92/93/94/95/96/97/98/99/100

The number after 51/52/53/54/55/56/57/58/59/60/61/62/63/64/65/66/67/68/69/70/71/72/73/74/75/76/77/78/79/80/81/82/83/84/85/86/87/88/89/90/91/92/93/94/95/96/97/98/99/100

The number after 51/52/53/54/55/56/57/58/59/60/61/62/63/64/65/66/67/68/69/70/71/72/73/74/75/76/77/78/79/80/81/82/83/84/85/86/87/88/89/90/91/92/93/94/95/96/97/98/99/100

The number after 51/52/53/54/55/56/57/58/59/60/61/62/63/64/65/66/67/68/69/70/71/72/73/74/75/76/77/78/79/80/81/82/83/84/85/86/87/88/89/90/91/92/93/94/95/96/97/98/99/100

1 means 1NO 2 means 1NC 3 means 2NO 4 means 2NC 5 means 3NO+1NC 6 means 3NO 7 means 2NC+1NO 8 means 3NO+1NC

Specializing in production of buttons and indicators since 1997

Model selection guide for identifying structure, material, and contact configurations.

Standard industrial electrical position switch designed for control systems.

Versatile Electrical Position Switch

This electrical position switch is designed for reliable control in industrial circuits, supporting AC voltages up to 660V and DC voltages below 400V. Built with a durable zinc alloy and high-grade anti-flame plastic body, it features silver alloy contacts for high resistance to electrical erosion. It is ideal for signal control, interlocking, and warning applications in various automation environments.

Electrical Ratings

Rated Insulation Voltage (Ui)	600 V
Conventional Heating Current (Ith)	10 A
Insulation Resistance	e5MΩ
Contact Resistance	d25mΩ
Power Frequency Withstand Voltage	AC 2.5KV/min

Performance Metrics

Mechanical Life

1000000 cycles
Pushbutton

500000 cycles
Selector Switch

Electrical Life

500000 cycles
Pushbutton

250000 cycles
Selector Switch

Compliance & Standards


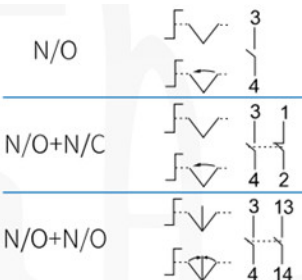
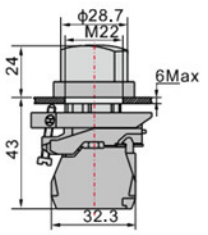
Certifications

CE, ISO 9001, RoHS, UL

Standards Compliance

GB/T14048.1, IEC60947-5-1

Technical Specifications

 <p>LAY4-BD25</p> <p>Standard Handle Selector Switch</p>		N/O	3	2-position stay put	LAY4-BD21		
			4	2-position spring return	LAY4-BD41		
		N/O+N/C	3	1	2-position stay put		LAY4-BD25
			4	2	2-position spring return		LAY4-BD45
		N/O+N/O	3	13	3-position stay put		LAY4-BD33
			4	14	3-position spring return		LAY4-BD53

Dimensional specifications and configuration options for selector switch models.

Mounting Specifications

Parameter	Value
Mounting Diameter	±0.02mm
Threading	M22
Max Panel Thickness	6mm
Base Width	32.3mm