

# Electric Ride-On Street Sweeper with Blower

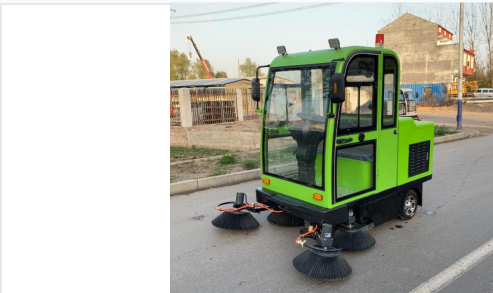
This electric street sweeper offers high working efficiency, cleaning up to 9800 square meters per hour. It features a thickened steel shell, dual disc brakes, LED spotlights, and a water spray system for dust control.



## ADDITIONAL IMAGES



## Overview



High-efficiency electric sweeper with integrated dust suppression technology.



Compact and maneuverable design suitable for urban and municipal applications.

### High-Efficiency Electric Sweeper

This electric road sweeper is designed for maximum efficiency in urban and industrial environments, capable of cleaning up to 9800 square meters per hour. It features a robust thickened steel body with electrophoresis paint for long-term durability and is equipped with a water spray system to effectively suppress dust. The operator-friendly design includes a comfortable cabin, LED spotlights for night operations, and a high-capacity trash collection system.

## Performance Metrics

### Key Performance Metrics

**9800 sqm/h**

Work Efficiency

**6 hours**

Working Time

**180 L**

Trash Bin Capacity

**12 km/h**

Max Walking Speed

## Technical Specifications

### Mechanical and Electrical Data

Parameter	Value
Sweeping Width	1900mm
Main Brush Width	700mm
Power System	48V
Battery Capacity	48V 100A
Rolling Brush Motor	700W
Machine Weight	625kg
Dimensions (L*W*H)	1950*1850*1900mm

## Features

### Design Quality

Thickened Steel Shell • Electrophoresis Paint • Tempered Glass • LED Double Spotlight • Water Spray Dust Control

### Safety & Operational Features

Dual Disc Brake, Anti-lock Brake System, Overload Protection, Constant Temperature Controller, On-board Parking System