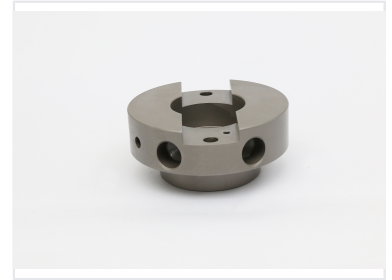
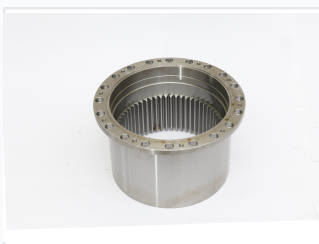


# Electric Motor Component with Splines and Flange

Precision-engineered with internal splines for optimal torque transmission. High-grade steel construction ensures durability and resistance to wear.



## ADDITIONAL IMAGES



## Product Overview

### High-Performance Motor Component

This precision-engineered component is designed for demanding electric motor and industrial machinery applications. Constructed from high-grade steel, it features advanced design elements including internal splines for optimal torque transmission and a robust flange for secure installation. Its durable build ensures reliable performance and resistance to wear in high-performance environments.

## Technical Specifications

### Primary Applications

- High-performance electric motors
- Industrial machinery assemblies

**Material** High-grade steel

**Key Design Features** Internal splines, Mounting flange, Threaded mounting holes, Precision machined

## Mechanical Details

### Torque Transmission

High Efficiency • Internal Spline Design

### Installation Capabilities

Feature	Description
Mounting	Threaded holes on outer flange
Structural	Cylindrical body