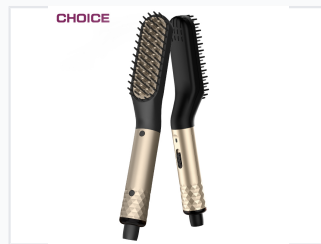


# Electric Heated Beard Straightening Comb

This electric beard comb is designed to straighten and style beards quickly and efficiently. It features three temperature settings, ranging from 180-200 degrees Celsius, and utilizes PTC heating for consistent performance.



## ADDITIONAL IMAGES



## Product Overview

### Professional Beard Grooming Tool

This electric heated beard straightening comb is designed to help men achieve a clean, tidy, and styled appearance. Utilizing advanced PTC heating technology, it ensures uniform heat distribution to soften and straighten facial hair effectively. With adjustable temperature settings, it offers versatility for different hair types and lengths, making it an essential tool for daily grooming routines.

## Technical Specifications

|                 |             |
|-----------------|-------------|
| Voltage         | 220 V       |
| Power           | 25 W        |
| Heating Element | PTC Heating |

## Performance

### Temperature Settings

- 180
- 200

### Key Performance Metrics

|                             |                                      |
|-----------------------------|--------------------------------------|
| <b>25 W</b><br>Power Output | <b>2 levels</b><br>Temperature Gears |
|-----------------------------|--------------------------------------|

## Compliance & Packaging

### Certifications

No certification at present

|           |                  |
|-----------|------------------|
| Packaging | Ordinary packing |
|-----------|------------------|