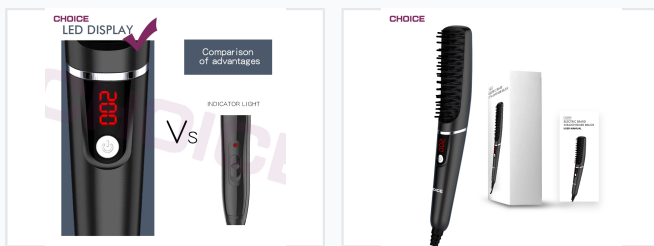


# Electric Hair Straightening Brush with LED Display

This electric hair straightening brush features an LED digital display for temperature control. It utilizes a PTC heating element and reaches the maximum temperature in under 3.5 minutes.



## ADDITIONAL IMAGES



## Product Overview

### Professional Electric Straightening Brush

This advanced hair and beard straightening brush features a high-efficiency PTC heating element capable of reaching maximum temperature in under 3.5 minutes. Designed with user safety in mind, it incorporates an anti-scald metal comb structure and an automatic power-off function after one hour of inactivity. Its ergonomic design includes a 360-degree rotating power cord and a clear LED interface, making it an essential tool for precise grooming.

## Performance

### Heating Metrics

**3.5 min**

Max Heat-up Time

### Available Temperature Settings

- 100
- 120
- 140
- 160
- 180
- 200

## Technical Specifications

Heating Technology	PTC Heating Body
Safety Features	Anti-scald design, 1-hour auto power-off, Metal comb
Power Cord Mobility	360-degree rotation
User Interface	LED digital display