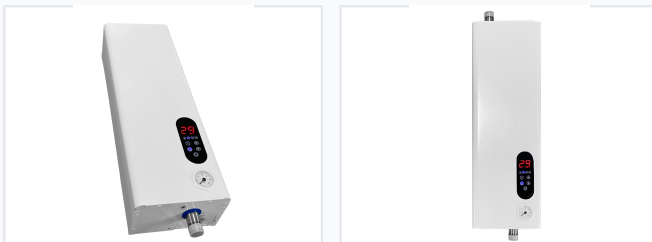


Electric Boiler for Central Heating and Hot Water

This electric boiler is designed for central heating systems and domestic hot water supply. It features multiple optional configurations and functions.



ADDITIONAL IMAGES



Overview

High-Efficiency Electric Boiler

This versatile electric boiler is designed for reliable central heating and domestic hot water applications, suitable for both residential and commercial use. It offers advanced electronic controls for precise temperature management of water, indoor air, and DHW tanks. With a high efficiency rating of 99%, this unit provides a compact and safe heating solution for spaces ranging from 30m² to 240m².

Performance

1 Power consumption, kW	3	4.5	6	7.5	9	12	15	18	21	24
1.1 Power rating (W) (optional)	1	1.5	2	2.5	3	4	5	6	7	8
2 Power rating (W) (optional)	2	3	4	5	6	8	9	10	12	15
3 Efficiency, %	99%									
4 Heating area, m² (100%)	20	20	30	30	30	30	30	30	30	30
5 Water capacity, L (4.5kW)	10L	20L	30L	30L	30L	30L	30L	30L	30L	30L
6 Model and the name, kg	Optional									
7 Cable class and/or CU support, mm²	2.5mm ²	Optional	3mm ²	Optional	4mm ²	Optional	6mm ²	Optional	6mm ²	Optional
8 Heating capacity, kW	30	45	60	75	90	120	150	180	210	240
9 Cold water inlet temperature, °C	5-15 °C									
10 Cold water outlet temperature, °C	55 °C									
11 Hot water outlet temperature, °C	55 °C									
12 Working pressure of water in the heating system, MPa	0.05-0.2MPa									
13 Water temperature control	Electronic, 0°C-50°C									
14 Water at temperature control	Electronic, 10°C-40°C									
15 Control system	Electronic, 0°C-50°C									
16 Water protection device	Optional									
17 Hot water	Optional									
18 Control valve (heating zone)	Optional									
19 Expansion tank & Safety valve	Optional									
20 Hot water protection, self-pump and expansion tank	Optional									
width	100			200						
depth	110									
height	200									
21 Hot water protection, self-pump and expansion tank	314			314						
width	100			200						
depth	110									
height	200									
22 The size of the connecting pipes	G3/4									
23 Safety and water supply system	Optional									
24 Storage system for heated hot water	Optional									

Technical breakdown of power consumption, dimensions, and operational limits.

Efficiency	99 %
Heating Area Coverage	30 - 240 m ²
Maximum Water Temperature	80 °C

Electrical

Power Consumption Options

- 3
- 4.5
- 6
- 7.5
- 9
- 12
- 15
- 18
- 21
- 24

Rated Voltage	220V ± 10%, 380V ± 10%
---------------	------------------------

Frequency	50/60Hz
-----------	---------

Safety & Control

Safety Features

Over-heating protection (85°C) • Dry heating protection (105°C) • Optional Safety Valve

Temperature Control Ranges

80 °C

Water Temp

40 °C

Indoor Air

60 °C

DHW Tank

Physical Dimensions

Unit Dimensions

Configuration	W (mm)	D (mm)	H (mm)
Without pump/expansion tank	190	118	662
With pump/expansion tank	314	230	712

Connection Pipe Size	G-3/4
----------------------	-------