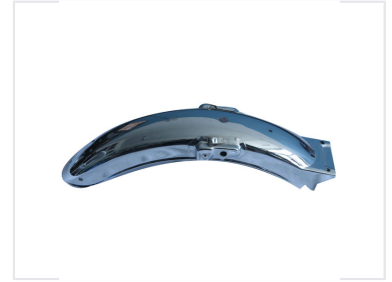
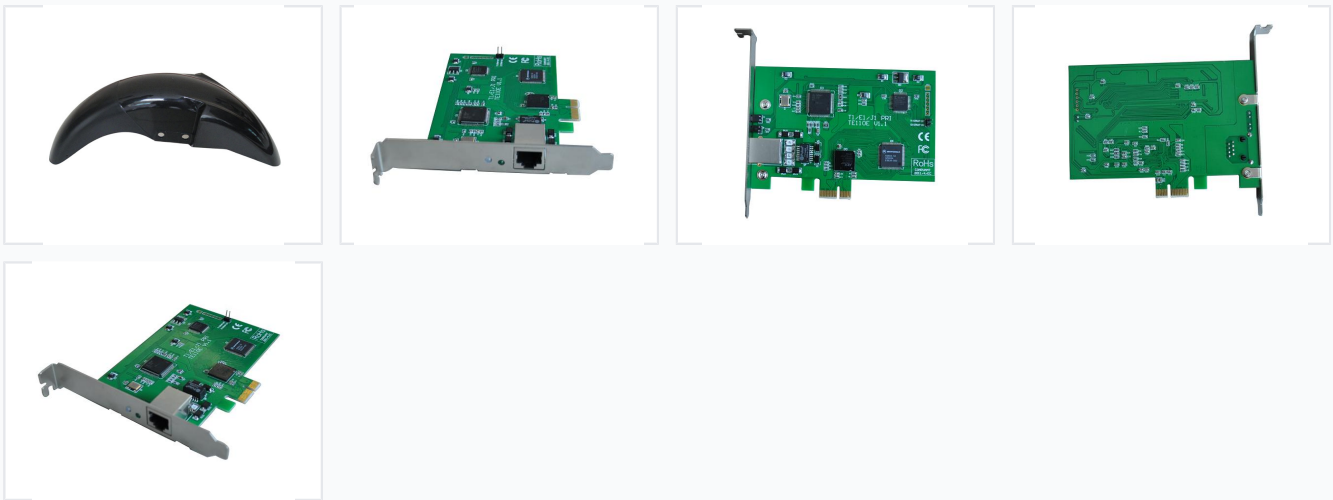


# E1 PRI PCI-E Digital Asterisk Card

This single-port E1 PCI-E digital asterisk card connects to digital communication lines. It supports 30 channels for asterisk-based telephony systems.



## ADDITIONAL IMAGES



## Product Overview

### High-Density Digital Telephony Interface

This single-port E1/T1 PCI-E digital card is designed to provide high-performance voice and data transmission for professional Asterisk-based PBX systems. It supports both RBS and Primary Rate ISDN protocols, making it an ideal solution for call centers, service providers, and VoIP gateways. Its low-profile design ensures compatibility with 2U rackmount cases, offering excellent density and scalability for demanding communication environments.

## Technical Specifications

### Supported Channels

- 32
- 24

### Interface Ports

1x E1/T1 Selectable

### Bus Type

PCI-Express

### Certifications

CE, FCC, RoHS

## Performance Features

### Key Performance Indicators

**30 Channels**

PRI Channels

### Protocols

- EuroISDN
- AT&T 4ESS
- Lucent 5E
- National ISDN2
- Cisco HDLC
- PPP
- Frame Relay

### Hardware Capabilities

- Hardware DTMF detection
- Conference Bridge
- PCM bus connectors
- Active channel switching