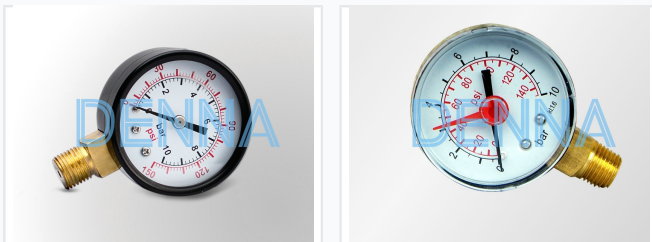


# Dual Scale Pressure Gauge

This pressure gauge measures pressure in diverse applications. It features a dual-scale display and robust construction with a clear dial for easy reading.



## ADDITIONAL IMAGES



## Product Overview

### Professional Dual-Scale Pressure Gauge

This industrial-grade pressure gauge is engineered for precision measurement in demanding pneumatic and hydraulic systems. Featuring a high-visibility dual-scale dial, it allows for seamless monitoring of pressure in multiple units across various commercial and industrial applications. Built with robust materials and high-quality construction, this gauge offers reliable performance and long-term durability in professional settings.

## Technical Specifications

### Build Materials

- Brass connection
- Durable metallic casing

### Supported Units

psi, bar, MPa

### Accuracy Class

1.6

## Application Suitability

### Compatible Systems

Pneumatic Systems, Hydraulic Systems, Industrial Settings, Commercial Applications