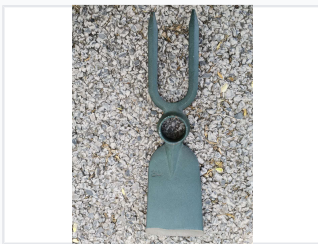


Dual Head Garden Hoe Fork

This dual-purpose gardening tool combines a hoe and a fork. It is constructed from durable metal with a socket for handle attachment and is suitable for weeding, cultivating, shaping, breaking up compacted soil, aerating, and transplanting seedlings.



ADDITIONAL IMAGES



Product Overview

Dual-Purpose Gardening Essential

This dual-head garden hoe fork is a versatile, heavy-duty tool designed for efficient soil cultivation and landscaping. Featuring a robust, all-metal construction, it combines a sharpened hoe blade for weeding and shaping with a two-tine fork for aeration and transplanting. Finished with a protective black coating, this implement offers excellent resistance to rust and corrosion, making it a reliable choice for professional gardening tasks.

Physical Attributes

Construction Material	Durable metal
Finish	Glossy black anti-corrosion coating

Design Features

Head Configuration

- Flat sharpened hoe blade
- Two-tine fork section
- Circular eye for handle insertion

Primary Functions	Weeding, Cultivating, Soil Shaping, Aerating, Transplanting
-------------------	---

Specifications Table

Key Dimensions

Feature	Description
Hoe Section	Flat, sharpened blade
Fork Section	Two tines
Handle Attachment	Socket/Circular eye