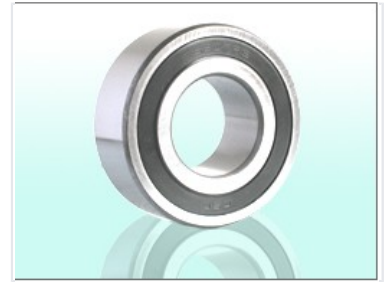


# Double Row Angular Contact Ball Bearing

This double row angular contact ball bearing is designed for combined radial and axial loads in both directions. Its internal design optimizes load distribution and reduces friction, ensuring smooth operation and extended service life.



## Product Overview

### High-Performance Angular Contact Bearing

This double row angular contact ball bearing is engineered to handle substantial combined radial and axial loads in both directions. Featuring a specialized two-row ball configuration, it offers superior stiffness and load capacity compared to single-row alternatives. Its design is optimized for high-precision applications, ensuring smooth operation, reduced friction, and extended service life in demanding industrial environments.

## Technical Specifications

### Protection

Seals • Shields

### Bearing Type

Double Row Angular Contact Ball Bearing

### Load Handling

Radial Load, Axial Load (Both Directions)

### Material

High-quality bearing steel

## Applications

### Typical Applications

- Machine tool spindles
- Pumps
- Gearboxes

## Performance Metrics

### Key Advantages

**2 rows**

Ball Rows

**100 %**

Load Distribution Efficiency