

# Double Layer Corrugated Metal Sheet Forming Machine

This double layer corrugated forming machine manufactures iron sheets and metal roofing materials. It is designed for producing corrugated sheets with consistent quality and dimensions.



## ADDITIONAL IMAGES



## Overview



Our machines feature beautiful appearance, simple operation, reasonable price, good quality and so on.

The dual-layer design allows for two different profiles in one machine, saving significant workshop space.

## High-Efficiency Double Layer Forming Solution

This double layer corrugated metal sheet forming machine is engineered to produce two distinct tile profiles within a single, space-saving footprint. It features a robust PLC automatic control system and high-precision rollers to ensure consistent quality for iron sheets, drywall, and metal roofing applications. Designed for versatility and ease of operation, it is an ideal solution for high-volume production environments with limited floor space.

## Performance Metrics

### Key Performance Metrics

**12 m/min**

Max Speed

**4 kW**

Main Power

**4 kW**

Pump Power

## Technical Specifications



Close-up of the multi-stage rolling process and integrated control interface.



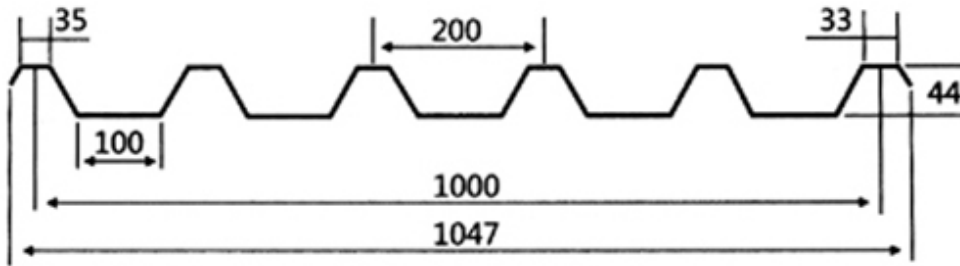
High-precision rollers made from 45# steel with chromium plating for durability.

### Roller Construction

- 45# steel base material
- Precision CNC-machined
- Heat treated and buffed
- 0.05mm chromium electroplating surface

Control System	Automatic PLC frequency control with text screen
Roller Steps	9/11 rows
Roller Diameter	72 mm

## Material Compatibility



Detailed dimensions of the produced corrugated profile, including a 44mm peak height and 1000mm effective width.

Feeding Width	1000 mm
Effective Width	840mm / 850mm
Plate Thickness	0.35 - 0.6 mm

## Physical Dimensions



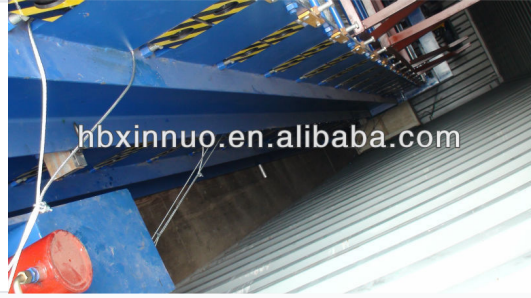
Robust steel frame ensures stability during high-speed operation.

Main Machine Dimensions	7600mm x 1300mm x 1450mm
-------------------------	--------------------------

## System Components



Heavy-duty construction designed for high-volume industrial production environments.



Integrated hydraulic system provides the necessary force for precise cutting and forming.

### Included Components

Uncoiler, Roll Forming Machine, Computer Control System, Hydraulic Control System, Cutting System

## Service & Support

### Warranty Period

1 Year