

# Double Layer Corrugated and IBR Roofing Sheet Roll Forming Machine

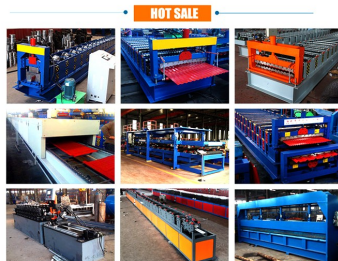
This machine produces double layer corrugated metal roofing sheets and IBR panels. It is designed for efficient, high-volume production.



## ADDITIONAL IMAGES



## Product Overview



Our machines feature beautiful appearance, simple operation, reasonable price, good quality and so on.

Engineered for high-volume production of IBR and corrugated metal sheets.

### High-Efficiency Double Layer Roofing Solution

This industrial-grade roll forming machine features a double-layer configuration designed to produce both corrugated metal roofing sheets and IBR (Inverted Box Rib) panels. Engineered for high-volume production, it combines robust construction with precision forming to ensure consistent dimensional accuracy across various metal gauges. The integrated hydraulic system and PLC control provide a reliable, automated solution for manufacturing durable, weather-resistant roofing materials.

## Technical Performance

### Key Performance Metrics

**12 m/min**

Max Speed

**5 T**

Loading Capacity

**0.8 mm**

Max Thickness

## Material Specifications

Compatible Materials	Color steel plate, Galvanized sheet, Aluminum coils
Feeding Material Width	914-1250mm
Feeding Material Thickness	0.3-0.8mm

## Forming System



Heavy-duty blue and yellow frame construction showing the roller series for dual-profile production.

Roller Stations	11-18 rows (customizable)
Roller Material	High grade No. 45 forged steel
Shaft Diameter	80 mm

## Control & Automation



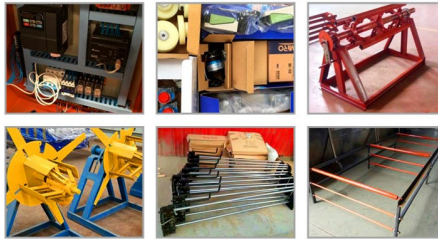
The integrated orange control panel allows for precise automation of the forming and cutting process.

### Control System

- PLC Computer Control Cabinet
- Automatic and Manual modes
- Programmable length and quantity settings
- Multi-language support: English, Chinese, Spanish, Russian

## Hydraulic & Cutting System

Spare part pictures:



Precision-engineered spare parts ensure long-term maintenance and consistent performance.

Cutting Blade Material	Cr12Mov with quenched treatment
Hydraulic Motor Power	4 kW
Working Pressure	12-16Mpa (adjustable)

## Uncoiler Specifications

### Manual Uncoiler Parameters

Parameter	Value
Inner Diameter	500-508mm
Max Outer Diameter	1250mm
Max Steel Coil Width	1300mm
Main Motor Power	5.5KW AC motor

## Quality & Compliance

### Certifications

CE • ISO 9001 • Alibaba.com Assessed

Warranty Period	1 year
-----------------	--------