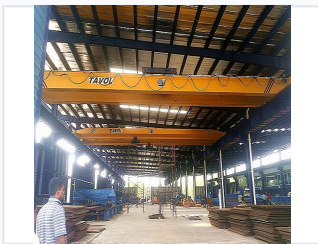


# Double Girder Overhead Crane

This double girder overhead crane is designed for heavy-duty applications. It is recommended for use in manufacturing or maintenance applications where heavier capacities and longer spans are required.



## ADDITIONAL IMAGES



## Product Overview



A robust 10-ton double girder crane designed for stable and efficient material handling.

### High-Performance Double Girder Lifting Solution

This double girder overhead crane is engineered for heavy-duty industrial applications requiring high load capacities and long spans. It features two bridge beams supported by end trucks, providing superior stability and allowing the electric hoist trolley to run along rails installed above the girders. Ideal for manufacturing, maintenance, and heavy material handling, this crane ensures precise control and reliable performance in demanding environments like steel plants, power stations, and large warehouses.

## Key Performance Metrics



A 20-ton configuration suitable for heavy manufacturing and steel plant environments.

### Lifting Capabilities

**60 T**

Maximum Capacity

**20 T**

Standard Heavy Duty

**5 T**

Minimum Configuration

## Technical Design



The heavy-duty main girder provides the structural integrity required for long-span applications.



Precision-engineered end trucks ensure smooth travel along the runway rails.



High-performance electric hoist mounted on the trolley for vertical lifting operations.

### Structural Features

- Dual bridge girder design for enhanced stability
- End truck support on each side
- Top-running electric hoist trolley
- Integrated maintenance platform
- Robust runway and bus bar system

## Applications



The system is compatible with various lifting attachments including slings for diverse cargo types.

### Target Industries

Steel Plants, Cement Plants, Power Plants, Mining, Food Industry, Chemical Industry, Shipyards, Paper Mills, Warehousing

## Control & Safety



Ergonomic remote control unit for safe and precise operation from the ground.

### Operation & Control

Industrial remote control unit with multi-directional push-buttons, safety switches, and emergency start/stop functionality.

## Business Terms

### Accepted Payment Terms

TT • L/C