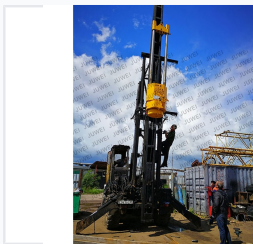


# Diesel Pile Hammer with Guide Rod

The diesel pile hammer features high impact energy and a simple structure. It is designed for easy operation and maintenance, with excellent cold start performance.



## ADDITIONAL IMAGES



## Overview

### High-Performance Guide Rod Diesel Pile Hammer

This guide rod diesel pile hammer is designed as a robust impulse-type piling solution, engineered for stability and ease of operation. It features a durable steel frame with a guide rod system that ensures accurate pile placement and alignment during construction. The unit provides high impact force, making it an ideal choice for a variety of pile driving tasks including concrete precast, cast-in-place, metal, and rammed piles.

## Key Features

### Compatible Pile Types

- Concrete precast piles
- Lime soil piles
- Cast-in-place piles
- Metal piles
- Rammed piles

### Suitable Applications

High-rise buildings, High-grade roads, Bridges, Airports, Ports and wharfs, Water conservancy projects

## Technical Specifications

### Available Models

DD25 • DD35

### Design Characteristics

- Simple structure
- Convenient operation and maintenance
- Stable performance
- Telescopic guide rod system
- Diesel-powered impact mechanism