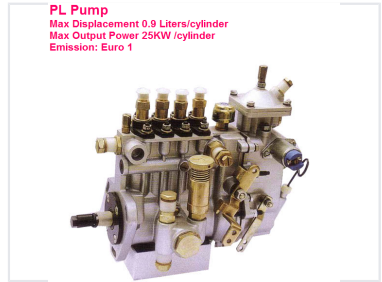
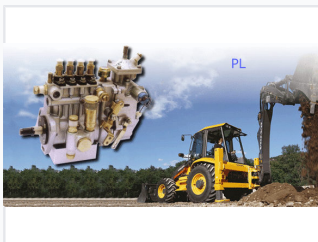


# Diesel Engine Fuel Injection Pump

This fuel injection pump is designed for diesel engines, delivering fuel at high pressure to the injectors. With a maximum displacement of 0.9 liters per cylinder and a maximum output power of 25kW per cylinder, it ensures efficient combustion and reduced emissions with Euro 1 compliance.



## ADDITIONAL IMAGES



## Overview

### High-Performance Diesel Fuel Injection

This diesel engine fuel injection pump is engineered for precise fuel metering and robust performance in heavy-duty applications. Designed to support engines with 2, 3, or 4 cylinders, it ensures efficient combustion and optimal power output. With a maximum system pressure of 70 MPa and versatile installation options, it is a reliable component for construction, agricultural, and industrial machinery.

## Technical Performance

Maximum Pump Pressure	70 Mpa
Maximum Flow (Geometry)	115 mm <sup>3</sup> /cycle
Top Speed	2200 rpm
Max Power per Cylinder	22 KW

## Engine Compatibility

### Cylinder Configuration

- 2
- 3
- 4

### Injection Order

Cylinder Count	Order
2 Cylinder	1-2
3 Cylinder	1-3-2 / 1-2-3
4 Cylinder	1-3-4-2

## Design & Construction

Piston Diameter	8.5 - 9.5 mm
Cam Profile	8 - 9 mm
Stroke	14.5 mm
Installation	Flange connection (25mm)
Rotation Direction	Clockwise, Counter-clockwise