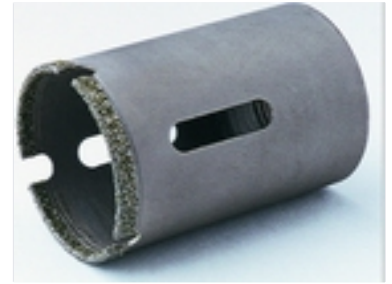


# Diamond Core Drill Bit

The diamond core drill bit is designed for precise and efficient hole drilling in hard materials such as ceramic, porcelain, granite, marble, and glass. It features side slots for easy core removal and is available in various sizes.



## Product Overview

### Professional Diamond Core Drill Bit

The SDG series diamond core drill bit is engineered for precision and efficiency when drilling into challenging materials like ceramic, porcelain, granite, marble, and glass. Built with a durable steel body and a high-performance diamond-impregnated cutting edge, this tool ensures clean cuts and extended service life. The design includes convenient side slots to facilitate easy core removal, making it a reliable solution for various professional drilling applications.

## Technical Specifications

### Design Features

- Diamond-impregnated cutting edge
- Durable steel body construction
- Side slots for efficient core removal

### Compatible Materials

Ceramic, Porcelain, Granite, Marble, Glass

### Compatibility

Standard drills

## Compliance

### Series

SDG Series