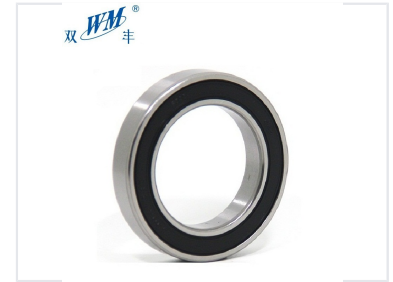


Deep Groove Ball Bearings 6002-6006

These deep groove ball bearings are available in sizes 6002 to 6006. They come in configurations including 2RS, ZZ, and open, with TN cages and C0, C3, and C5 clearance options.



ADDITIONAL IMAGES



Overview

High-Precision Deep Groove Ball Bearings

These deep groove ball bearings are engineered for high-precision performance in demanding industrial and automotive environments. Featuring a deep, uninterrupted raceway, they efficiently handle both radial and axial loads while maintaining smooth, low-noise operation. With multiple sealing options and specialized Electric Motor Quality (EMQ) standards, these bearings are ideal for electric motors, gearboxes, and various rotating machinery requiring extended service life.

Technical Specifications

Widely Use Grease Specification

Manufacturer	Brand	Base Oil	Thickness	Viscosity of Base Oil Working Temperature		
				40°C	100°C	°C
Kufemp	SRM	Polyol ester	Lithium soap	55	5	-50~150
	SRG	Polyol ester+diester	Lithium soap	25	5.1	-50~150
	SR-61	polyethetic hydrocarbon	Polyurea	47.6	5.9	-40~150
	ET-K	ether-synthetic polyol lipid	Amoritic dialkyl zinc	95.1	12.3	-40~200
Kufemp	FSE	polyurethane hydrocarbon	Lithium soap	25.1	4.7	-50~150
	FS	isopar diethylene hydrocarbon	Polyurea	19.9	50.9	-40~200
Shell	RL02	infrared oil	Lithium base	79.9	8.3	-25~120
	RL2	infrared oil	Lithium base	75	8	-20~100
	RL3	infrared oil	Lithium base	75	6	-10~100
	AV2	infrared oil	Lithium base	130	12.2	-25~120
Klüber	BQ-H2-302	ester	Polyurea	70	14.4	-40~180
	ASDNC-ALV32	ester	Lithium base	25	5	-50~140
	ASDNC-OLV32	ester	Polyurea	47.6	10	-40~160
	RETARCO-6V113	isopar diethylene hydrocarbon	Polyurea	150	4	-35~160
COGN-Med	EM400025	isopar	Lithium soap	12	4	-25~110
	EM400025	isopar	Lithium soap	115	4	-40~190
	EM400025	isopar	Polyurea	115	21	-40~190
	EMQ2	infrared oil	Lithium base	110	11.98	-10~130
Daguet	IN2	ester	Lithium base	73.5	4.88	-30~130
	IN2	ester	Lithium base	100	19	-34~180
Chevron	SHI 2	polyurethane hydrocarbon	Polyurea	100	11	-30~190
	SHI 2	polyurethane hydrocarbon	Lithium base	100	12	-30~190

Comprehensive grease selection options for various temperature and speed requirements.

PRODUCTS INSPECTION



Rigorous friction, visual, and pre-delivery inspections ensure high performance.

Precision Class

P0 • P5 • P6 • ABEC-3 • ABEC-5

Available Series

6000-6013, 6201-6211, 6301-6309, 6905-6909

Material

Chrome Steel (Gcr15)

Internal Clearance

C0, C2, C3, C5

Vibration & Noise Rating

Z2V2, Z3V3, EMQ Quality

Design & Construction



Detailed view of the inner ring, outer ring, cage, and ball assembly.

Sealing & Shielding Options

- OPEN (Unsealed)
- ZZ (Metal Shielded)
- 2RS (Rubber Sealed)
- RZ / 2RZ (Low Friction Seals)
- Z / RS (Single Side Shield/Seal)

Cage Material

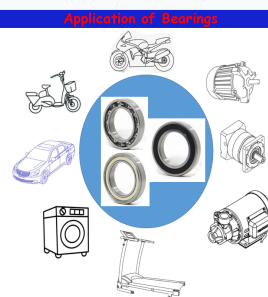
TN (Polyamide/Nylon) or Stamping Steel

Performance Data

6300 Series Technical Parameters

Model	Bore (d) mm	OD (D) mm	Width (B) mm	Cr (kN)	Cor (kN)
6301	12	37	12	7.48	4.65
6302	15	42	13	8.8	5.43
6303	17	47	14	10.45	6.56
6304	20	52	15	12.26	7.81
6305	25	62	17	17.22	11.39

Applications



Versatile applications including electric motors and industrial machinery.

Recommended Uses

- Electric Motors
- Automotive Components
- Industrial Machinery
- Gearboxes
- Household Appliances

Logistics & Services

Packaging	Neutral Packing, Color Box, or Industrial Bulk Packing
Buyer Services	OEM Service, Logo Printing, Free Samples (<5 pcs), Custom Packing