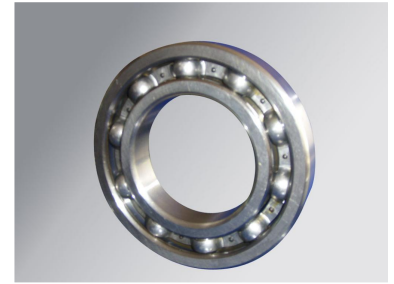


# Deep Groove Ball Bearing

This deep groove ball bearing is designed for excellent quality. It offers prompt delivery and reasonable pricing.



## Overview

### High-Performance Deep Groove Ball Bearing

These deep groove ball bearings are engineered for high precision, low noise operation, and an extended service life. Constructed from durable bearing steel, they are designed to support a wide range of industrial applications including machine tools, electrical systems, and automotive machinery. With versatile material options for retainers and high-precision tolerance levels, these bearings offer reliable performance in demanding environments.

## Technical Specifications

### Retainer Materials

- Copper
- Nylon
- Bakelite
- Stainless Steel

<b>Bore Diameter Range</b>	1mm - 1800mm
<b>Precision Level</b>	P4, P5, P6, P0, ABEC7, ABEC5, ABEC3, ABEC1
<b>Materials</b>	GCr15, SiMn

## Quality & Standards

### Quality Standard

ISO9000

### Key Features

- Low noise
- Long service life
- High precision

## Applications

### Typical Applications

- Machine tools
- Electrical equipment
- Railways
- Automotive
- Construction machinery

## Logistics

Packaging

Plastic bag + single box + carton + pallet