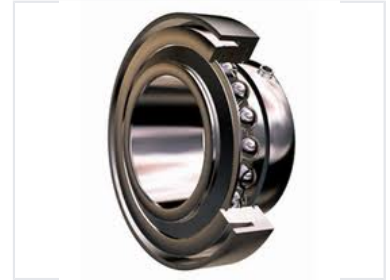


Deep Groove Ball Bearing

Deep groove ball bearings are designed to handle radial and axial loads in both directions. Their deep grooves facilitate smooth and efficient ball movement, reducing friction and heat.



Product Overview

Versatile Industrial Performance

Deep groove ball bearings are essential components engineered for high-precision industrial applications, offering excellent durability and low-noise operation. With a design capable of handling both radial and axial loads, these bearings provide superior efficiency for electric motors, gearboxes, and heavy machinery. Available in a wide range of sizes and material compositions, they are built to meet rigorous global quality standards for long-term reliability.

Technical Specifications

Retainer Materials

- Cooper
- Nylon
- Bakelite
- Stainless Steel

Bore Diameter Range	1mm - 1800mm
Precision Ratings	P4, P5, P6, P0, ABEC7, ABEC5, ABEC3, ABEC1
Primary Material	Bearing Steel (GCr15, SiMn)

Performance Features

Operational Benefits

Low Noise • Long Life • High Precision

Application Scope

Industries Served

- Machine Tools
- Electrical Equipment
- Railways
- Automotive
- Construction Machinery

Compliance & Quality

Quality Standard	ISO9000
-------------------------	---------