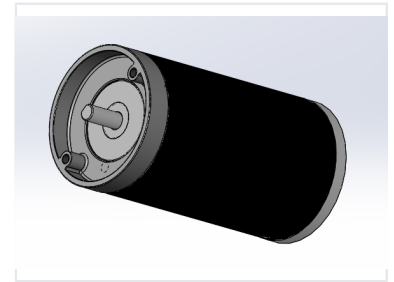


DC Motor for Water Pump

This DC motor is designed for water pump applications. It operates with low noise and offers a long operational life.



ADDITIONAL IMAGES



Overview

Professional Grade DC Water Pump Motor

This 230V DC motor is precision-engineered to provide optimal speed and torque for water pumping applications. Designed for reliability, it features low-noise operation and an extended service life suitable for demanding environments like water filters and purifiers. The unit offers a versatile engineering platform for rapid customization to meet specific project requirements.

Performance Metrics

Performance Data

230 V

Voltage

180 mN.m

Torque

38 W

Power

2000 RPM

Speed

Technical Details

Model Number

PT4850230

Key Features

Key Benefits

Long Life, Low Noise, Customizable