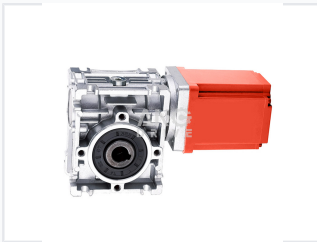


DC Gear Motor with Planetary Gearbox

This DC gear motor is available in brush or brushless configurations. It features a planetary or right-angle gearbox.



ADDITIONAL IMAGES



Product Overview

Versatile DC Gear Motor Solutions

This high-performance DC gear motor series offers a flexible solution for industrial automation, robotics, and precision machinery. Available in both brush and brushless configurations, these motors are paired with robust planetary or right-angle gearboxes to deliver high torque density and efficient power transmission. With a wide range of customizable voltages and output power options, they are designed to meet diverse application requirements while ensuring reliable, low-noise operation.

Technical Performance

Output Power

3 W

Min Power

2200 W

Max Power

Motor Rated Speed

- 2000 rpm
- 3000 rpm
- Range: 1500 - 4000 rpm

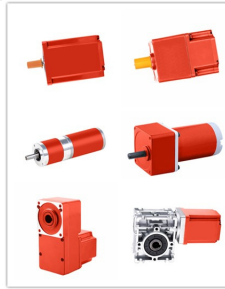
Available Voltages

12V, 24V, 36V, 48V, 90V, 110V, 180V, 220V, 310V

Reduction Ratio

1/3 ~ 1/3000 (3 ~ 200K)

Mechanical Specifications



A diverse range of DC gear motors featuring different frame sizes and gearbox configurations to suit various industrial needs.

Motor Technology

Brush DC • Brushless DC (BLDC) • Stepper

Gearbox Types

- Planetary center shaft
- Parallel shaft
- Right angle hollow/solid worm shaft
- Right angle bevel hollow/solid shaft
- Flat type hollow/solid shaft

Frame Size

16mm to 130mm (Customizable)

Output Shaft Options

Round shaft, D-cut shaft, Key-way shaft, Hollow shaft

Key Advantages

Design Advantages

- Oil leakage prevention design
- Low noise operation
- Minimal temperature rise
- One-piece forging gear and shaft
- Plasma nitriding heat treatment for heavy loads
- Dual ball bearings on shaft sides for high efficiency

Accessories & Control

Integrated Accessories

Internal Driver, External Driver, Connector, Brake, Encoder