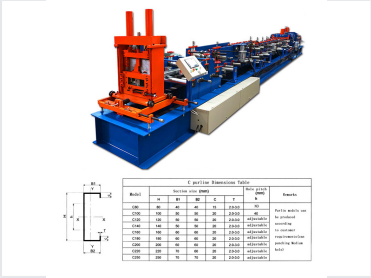
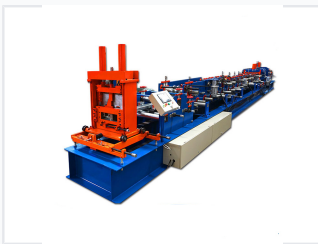


# C/Z Purlin Roll Forming Machine C80-300

This roll forming machine produces both C and Z purlins from steel coils. It features adjustable capabilities to produce purlins in various sizes, specifically ranging from C80 to C300.



## ADDITIONAL IMAGES



## Overview



### High-Efficiency C/Z Purlin Production

The C80-300 Roll Forming Machine is a versatile industrial solution designed for the automated production of both C and Z shaped steel purlins. Featuring a changeable design, it allows operators to switch between profiles and adjust dimensions from 80mm to 300mm without changing molds. This robust system is engineered for high-precision manufacturing of structural components used in modern construction, warehouses, and high-rise building projects.

## Performance Metrics

### Performance Highlights

**24 m/min**

Max Forming Speed

**22 kW**

Total Power

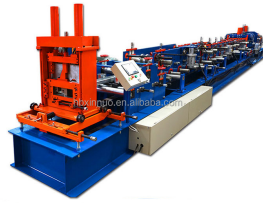
**5 T**

Uncoiler Capacity

**18 Rows**

Roller Stations

## Technical Specifications



Forming Speed	12-24 m/min
Power Supply	380V, 3-Phase, 50Hz
Main Frame Construction	400mm H-Beam
Feeding Material Thickness	1.5mm - 3.0mm

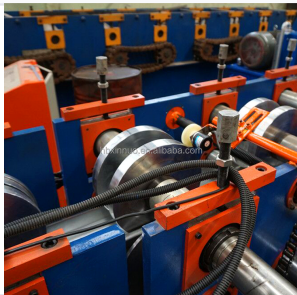
## Control & Automation

### Interface Languages

- English
- Chinese
- Spanish
- Russian

Control System Components	PLC, Inverter, Encoder, Touch Screen, Automatic Mode, Manual Mode
---------------------------	---

## Production Capabilities



### C-Purlin Dimension Range

Model	Height (mm)	Width B1/B2 (mm)	Thickness (mm)	Hole Pitch
C80	80	40/40	2.0-3.0	None
C100	100	50/50	2.0-3.0	40mm
C160	160	60/60	2.0-3.0	Adjustable
C250	250	70/70	2.0-3.0	Adjustable

## System Components



### Standard Configuration

- Manual Uncoiler
- Guiding Platform
- 9 Shaft Strip Leveler
- Main Roll Forming Machine
- Hydraulic Motor
- Pre-Punching Device
- Pre-Cutting Device
- Hydraulic Station
- PLC Control Cabinet
- Supporter Table

## Component Details



<b>Roller Material</b>	High grade Gcr15 forged steel
<b>Cutting Blade Material</b>	Cr12Mov with quenched treatment
<b>Hydraulic System Pressure</b>	12-16Mpa (Adjustable)