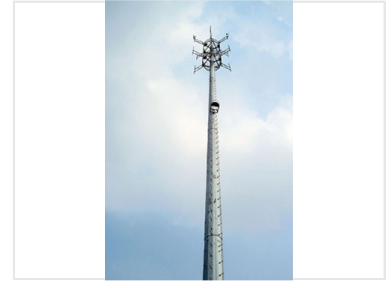


# Cylindrical Lattice Tower

This metal lattice tower features a cylindrical design. It is equipped with evenly spaced rungs and a complex array of antenna structures.



## Product Overview

### Engineered for Connectivity

This cylindrical lattice tower is a robust, industrial-grade structure designed for high-altitude applications such as telecommunications and signal broadcasting. Featuring a modular design with bolted connections, it ensures structural integrity and stability even in demanding environments. The tower includes integrated maintenance access via vertical rungs, facilitating safe and efficient servicing of the antenna arrays mounted at the summit.

## Technical Construction

### Maintenance Access

- Integrated vertical ladders
- Evenly spaced maintenance rungs
- Modular shaft access

Construction Style	Cylindrical Lattice
Assembly Method	Modular, Bolted, Riveted

## Application & Usage

### Primary Applications

Telecommunications • Industrial Infrastructure • Signal Broadcasting