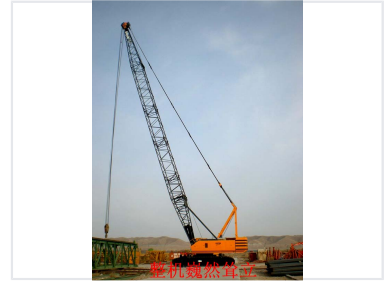


Crawler Crane with Lattice Boom

This heavy-duty construction crane features a lattice boom design and hydraulic lifting mechanism. The crane is equipped with cables and pulleys for lifting heavy loads and crawler tracks for stability.



Overview

High-Performance Crawler Crane

The KR75H Crawler Crane features a robust lattice boom design engineered for demanding construction and industrial lifting applications. Equipped with high-stability crawler tracks and a precise hydraulic lifting mechanism, it ensures reliable operation on uneven terrain. This heavy-duty machine utilizes a sophisticated cable and pulley system to safely handle and position heavy loads with maximum efficiency.

Technical Specifications

Model	KR75H
Boom Type	Lattice Boom
Mobility	Crawler Tracks

Features

Application Suitability

- Heavy Construction
- Industrial Lifting
- Material Handling

Key Features

Hydraulic Lifting, Lattice Boom Design, Crawler Stability, Industrial Grade