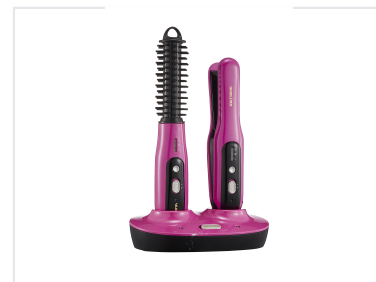


Cordless Hair Styling Set with Heated Brush and Straightener

This cordless hair styling set features a heated brush and a hair straightener. Both devices offer multiple temperature settings and come with a charging base for convenient storage and recharging.



Overview

Professional Cordless Styling Solution

This versatile hair styling set combines a cordless hair straightener and a heated curling brush, offering professional-grade results in a portable form factor. Designed for convenience, both tools feature fast-heating ceramic coating plates and adjustable temperature settings to suit various hair types. With a rechargeable battery and rapid heat-up times, this set is an ideal solution for on-the-go styling needs.

Performance Metrics

Straightener Key Metrics

30 s

Heat-up Time

180 °C

Max Temperature

40 min

Usage Time

Curling Brush Key Metrics

30 s

Heat-up Time

180 °C

Max Temperature

40 min

Usage Time

Technical Specifications

Device Specifications

Feature	Straightener	Curling Brush
Dimensions	24x80mm plate	Ø22.5mm x 85mm
Temperature Control	140°C / 180°C	140°C / 180°C
Charging Time	2 Hours	2 Hours
Voltage	4.8Vdc	4.8Vdc

Power & Connectivity

Power Supply

- Input: 100-240Vac 50/60Hz
- Output: 9Vdc 1A
- Battery Type: Rechargeable ICR 18650mA
- Power Cord Length: 1.8m

Features

Key Technologies

Ceramic Coating, MCH Heater, NTC Control, LED Indicator, Cordless Operation