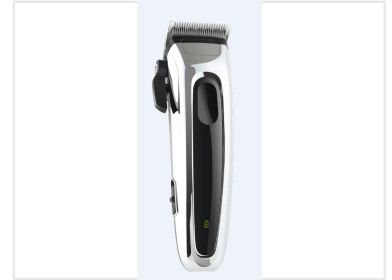


Cordless Hair Clipper with Adjustable Blades

This cordless hair clipper features precision-honed stainless steel blades for smooth, even cuts. It has an adjustable taper lever for customized cutting lengths and a powerful motor for efficient performance.



ADDITIONAL IMAGES



Product Overview

Professional Cordless Grooming Solution

This rechargeable professional hair clipper offers the flexibility of both corded and cordless operation, making it suitable for versatile grooming environments. Designed with a detachable stainless steel blade system for easy maintenance, it delivers consistent performance with a powerful motor. The unit features an adjustable taper lever and multiple comb attachments, allowing for precise control over cutting lengths and styling.

Technical Specifications

Charging Time	2.5 hours
Working Time	150 min
Operation Mode	Corded, Cordless

Cutting Performance

Included Comb Attachments

- 3
- 6
- 9
- 12

Blade Adjustment Steps	4
------------------------	---

Maintenance & Accessories

Included Accessories

Oil Bottle • Cleaning Brush • 4 Comb Attachments

Blade Material	Stainless Steel
----------------	-----------------