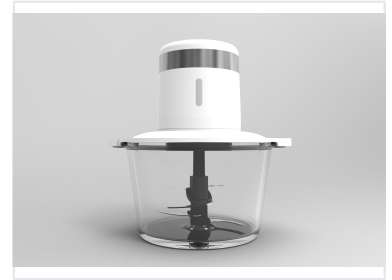


Cordless Electric Food Chopper

This cordless electric food chopper is designed for chopping, mincing, and pureeing ingredients. It features a rechargeable battery for portable use, a transparent bowl for monitoring food processing, and stainless steel blades for efficient cutting.



Product Overview

Cordless Convenience for Modern Kitchens

The JRC-1000 is a high-performance, cordless mini food chopper designed to streamline kitchen tasks like mincing and pureeing. Featuring a robust 11.1V motor and a versatile 1.2L bowl capacity, it offers the perfect balance of power and portability for both home and professional food preparation. Its luxury design and reliable charging system make it an essential tool for efficient cooking.

Technical Specifications

Model Number	JRC-1000
Bowl Capacity	1.2 L
Motor Voltage	11.1 V
Charger Input Voltage	100-240V

Certifications & Compliance

Quality & Safety Standards	GS, CE, CB, EMC, RoHS, LFGB, REACH, BPA Free, ETL, CETL, FCC, FDA
----------------------------	---