

Control Arm Bushing for TOYOTA SPACIA

This control arm bushing provides a durable connection between the control arm and the vehicle's frame, ensuring proper suspension movement. It is manufactured from high-quality steel and natural rubber for resistance to wear and corrosion.



Product Overview



Premium Suspension Control Arm Bushing

This high-quality control arm bushing is specifically engineered for TOYOTA SPACIA vehicles to provide a durable connection between the control arm and the vehicle frame. It effectively reduces noise, vibration, and harshness (NVH) while restoring optimal suspension alignment and handling characteristics. Manufactured from refined steel and natural rubber, it ensures a long service life and improved driving comfort through advanced multi-point glue injection technology.

Technical Specifications

Manufacturing Process

- One-piece casting
- Multi-point glue injection (0.001um fineness)
- Uniform metal thickness processing
- Precision hole locating

Material Composition

Refined Steel, Natural Rubber, Anti-corrosion Coating

Performance Metrics



Performance Benefits

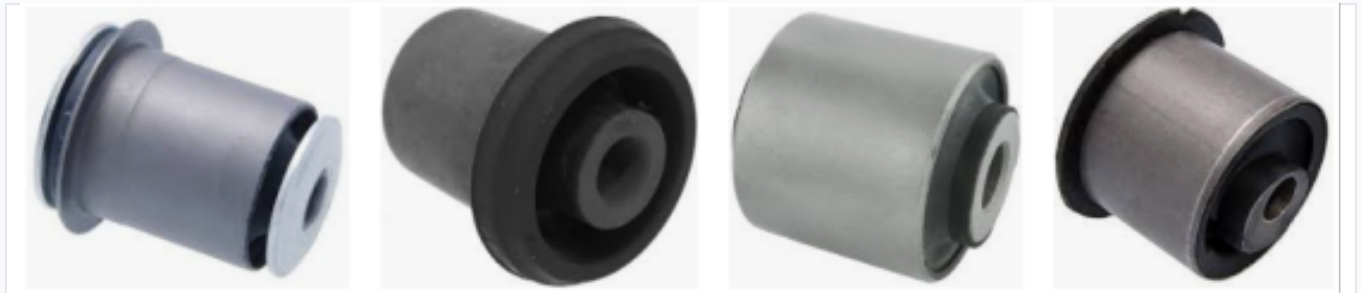
12 Months
Warranty

100 %
In-situ Fit

Core Functions

- Resolves vehicle jitters
- Improves driving stability
- Enhances cabin comfort
- Reduces metal-on-metal contact

Installation & Compatibility



Fitment Type

Direct Replacement • In-situ Installation

Compatible Vehicle

TOYOTA SPACIA

Commercial Terms

Order Details

Parameter	Value
Minimum Order Quantity	500 pcs
Lead Time	45-60 days
Packaging	Neutral (Plastic Bag + Carton Box)
Trade Terms	EXW, FOB, CIF

Quality Standards

Quality Certifications

ISO, IATF 16949:2016